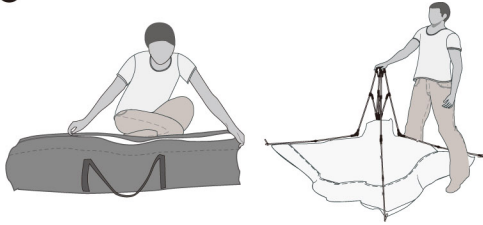


# INSTRUCTIONS FOR QUICK SET DOME TENT 703

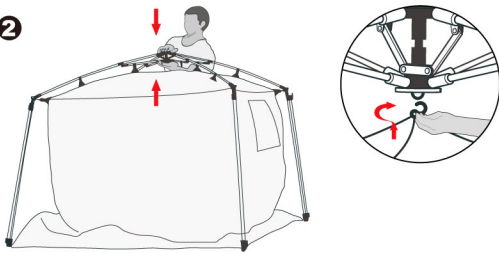
## SET UP

1



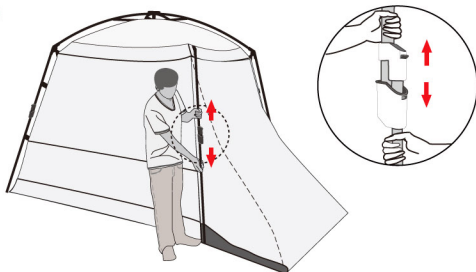
Place the tent on ground and extend the 4 legs.

2



Hold the central hub upright and lift it head height. Gently push the upper and lower hubs together. Insert the safety locking hook.

3



Straighten tent legs and lock into place.

4



**IMPORTANT!** Use the pegs and guyline (the same as picture).

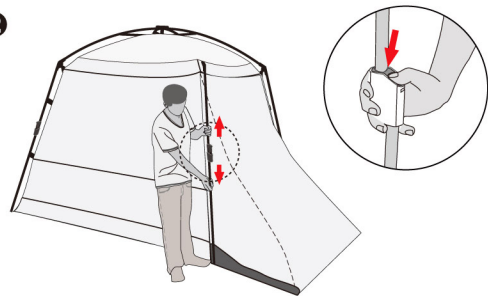
## FOLD DOWN

1



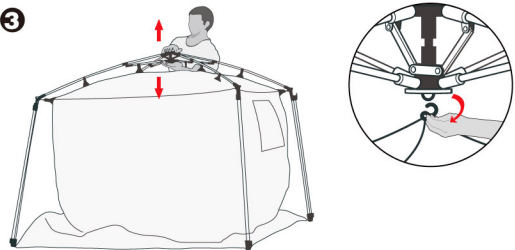
Release the pegs and guyline.

2



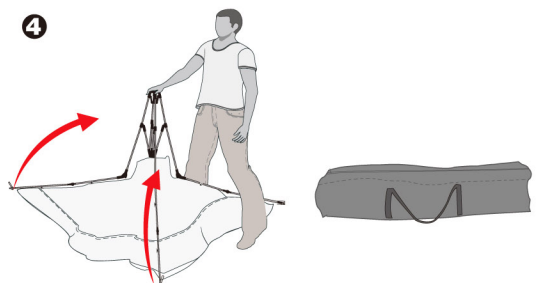
Release locks on tent legs.

3



Remove safety locking hook. Disconnect the upper and lower central hub. Legs will automatically fall.

4



Fold 4 legs toward central hub. Roll tent and place into carry bag.



**Pinnacle Tents**  
4022 E. Greenway Road  
Suite 11-153  
Phoenix, AZ 85032  
[www.camptents.com](http://www.camptents.com)  
[www.pinnacletents.com](http://www.pinnacletents.com)